



“Melissa” bracelet

Material (for one bracelet):

- Z Beads 10mm (approximately 39 pcs)
- 3mm or 4mm firepolished beads (approximately 12 pcs)
- Miyuki Round 15/0 (approx 0.2 gram)
- 11/0 Round seed beads (4 pcs, optional)
- Beading wire, 0.015-inch diameter (2 pieces, a little bit longer than the desired length of the bracelet)
- Crimp beads (2 pcs), bead tips (2 pcs)
- Jump rings (3 pcs), a clasp (1 pc)

Chain nose pliers, wire cutters

Difficulty: For beginners

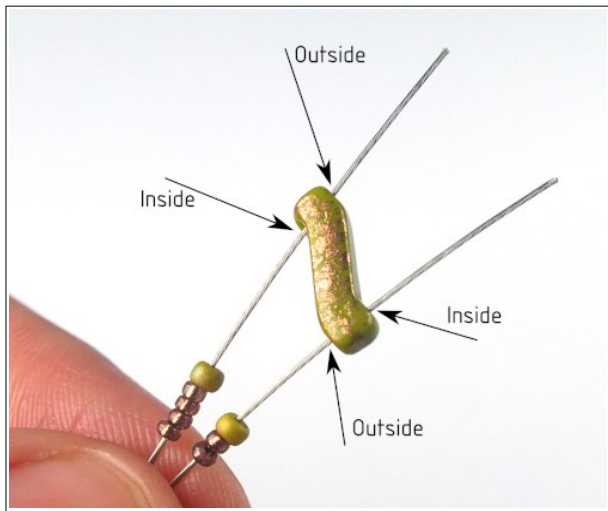
Before you start:

Materials listed in this pattern will suffice for a bracelet that is approximately 19 centimeters / 7.4 in long (including the clasp).

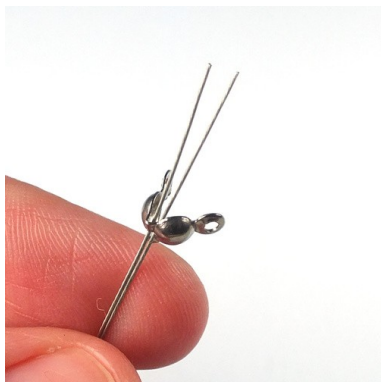
In this bracelet you can use 3mm firepolished beads, 4mm firepolished beads or 3mm firepolished beads combined with 15/0 seed beads. All these variants work the same but each bracelet looks a little bit different (see the last page for more inspiration) – choose whatever you like the most or whatever you have in your supplies.

You can use multiple colors of Z beads in this pattern.

When working with Z beads it is important to make sure you're stringing them the right direction. In my patterns, I use terms "inside" and "outside" to specify from where the stringing material should pass through a bead - as shown in the picture below - the upper wire is going "from the inside", the lower one "from the outside".



1) Cut two pieces of beading wire, each slightly longer than the desired length of the bracelet.

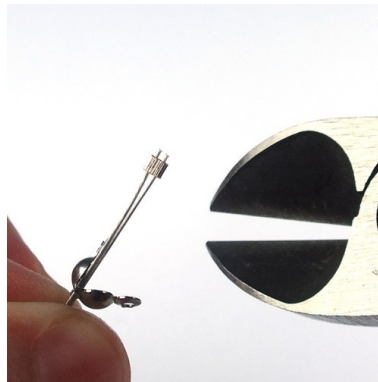
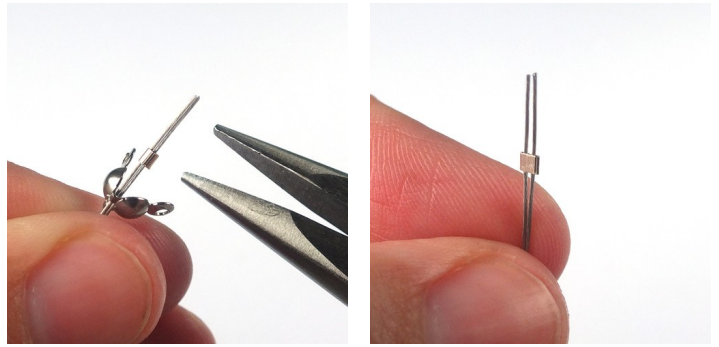


2) On both pieces of wire string a bead tip (closed side first) ...



3) ... and then a crimp bead.

4) Squeeze the crimp beads with chain nose pliers to flatten it.



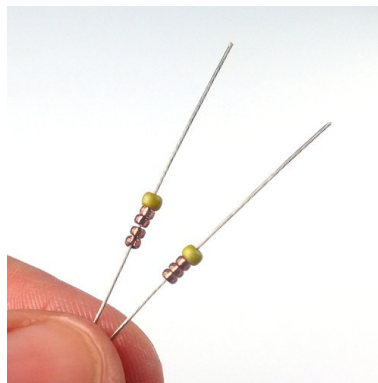
5) If necessary, use wire cutters to shorten the remaining beading wire - cut it as close to the crimp bead as possible.



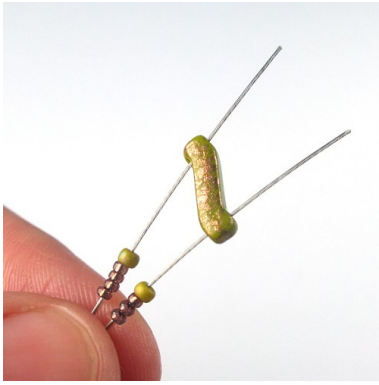
5) Pull the open bead tip over the crimp bead ...



6) ... and then gently close the bead tip over the crimp bead using chain nose or flat nose pliers (optionally you can add a dab of glue inside the bead tip before you close it).



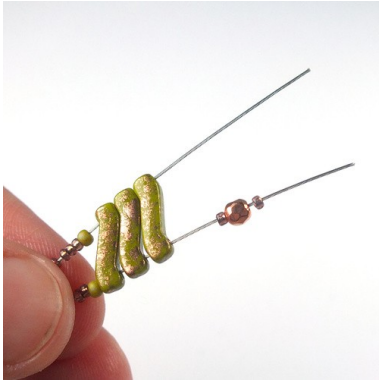
7) Start stringing beads on the opposite ends of the wire. On one wire string four 15/0s and one 11/0 and on the other just three 15/0 and one 11/0.



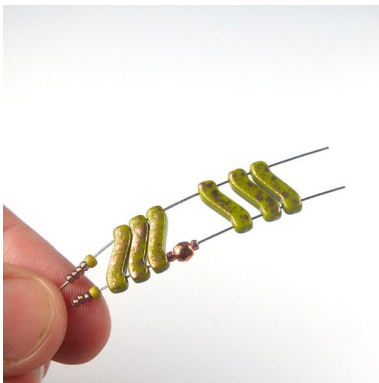
8) Then add one Z Bead – like shown in the photo. Mind the direction of the Z bead – the end of the wire with more seed beads is passing through the Z bead from the inside, the end with less beads from the outside.



9) Add two more Z beads in the same direction.



10) On the piece of wire that is exiting from the inside of the previous Z bead, add (15/0, 3mm FP and 15/0) (optionally you can leave the 15/0s out or use a 4mm FP bead).



11) Add three more Z beads – this time in the opposite direction (the wire with the newly-added FP bead goes through the Z bead from the inside).



12) Repeat step 10 ...



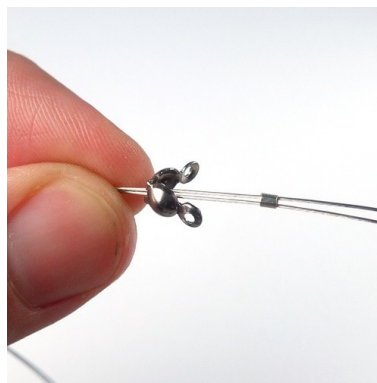
13) ... and 11 ...



14) ... until you reach the desired length of the bracelet.



15) On the end of the wire that is exiting from the inside of the last Z bead string one 11/0 and four 15/0s, on the one exiting from the outside add one 11/0 and just three 15/0s.



16) Then again, string a bead tip (closed end first) and a crimp beads



17) Slide both components down to the beads and pull snug. Make sure the bracelet is not crooked and it holds the shape nicely.



18) Then flatten the crimp bead as close to the inside of the bead tip as possible ...



19) ... and cut off all the remaining wire ...



20) ... as close to the crimp bead as possible ...



21) ... and then gently close the bead tip over the crimp bead using chain nose or flat nose pliers (optionally you can add a dab of glue inside the bead tip before you close it).



22) Then add a few jump rings to one end of the bracelet (connect them to the eye of the bead tip) ...



23) ... and then add a clasp of your choice to the other end.



24) The bracelet is finished.



Colorways:

Tip: Colors of 15/0s and 11/0s will only be listed if they're used in the bracelet itself. If they're only used at the ends of the bracelet, they won't be listed here – feel free to use any matching color:



Green

Z Beads 10mm 53410/94412

3mm FP 00030/39000

Miyuki Round 15/0 4249

Duracoat S/L Dyed Rose Bronze



Red

Z Beads 10mm 93200/15496

3mm FP(63130/15695



Blue

Z Beads 10mm 63030/94401

4mm FP 03000/65322



Turquoise gradient

Z Beads 10mm 63130,

63030/86805, 63130/15001

3mm FP 00030/37000/28701

Miyuki Round 15/0 190 Steel